



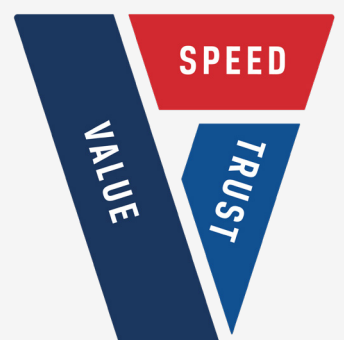
Local Information

*including Hotels, Restaurants, Shopping,
Local Attractions and Car Hire information*

The FUSO logo consists of the word 'FUSO' in white, bold, uppercase letters inside a red rounded rectangular box.

FUSO

Port Melbourne



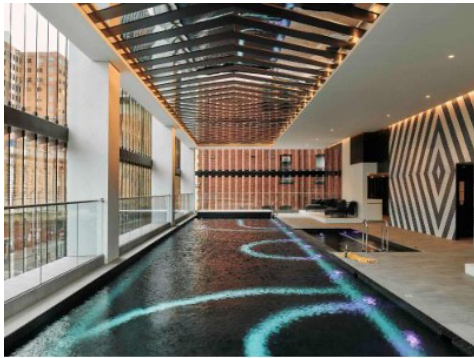
Contents

Hotels	Page 2
Restaurants	Page 4
Shopping	Page 7
Local Attractions	Page 8
Car Hire Information	Page 9

Hotels

Movenpick Hotel Melbourne

Welcome to Mövenpick Hotel Melbourne on Spencer, Accor's 2nd Mövenpick Hotel in Australia. Forming the 'podium' of Melbourne's iconic Premier Tower, our hotel's 172 luxury hotel rooms and suites cover floors 1 to 6, The 5-star boutique Mövenpick Hotel Melbourne on Spencer delivers a hotel experience that blurs the lines between art and design. Book Today!



160 Spencer Street, Melbourne
Reservations 03 9600 5400
hb619@movenpick.com

Novotel Melbourne on Collins

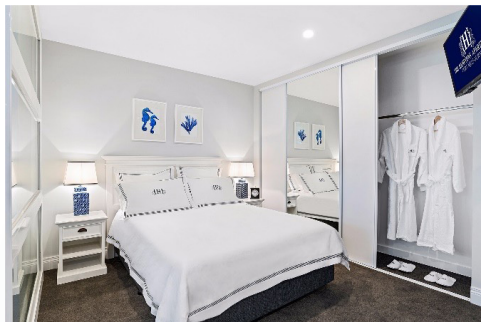
You will be greeted by Novotel Melbourne on Collins, in the heart of Melbourne, offering you a contemporary style and 4.5-star comfort. The most unique shopping destination in Melbourne, it is located on fashionable Collins Street, directly above the fashionable St. Collins Lane. The hotel is situated close to Rod Laver Arena, MCG, Federation Square, Princess, and Regent Theatres in the heart of Melbourne City. Melbourne accommodation must be available on the doorstep of all these cosmopolitan cities.



270 Collins Street Melbourne
Reservations 03 9667 5800
H1587@accor.com

The Hamptons Apartments

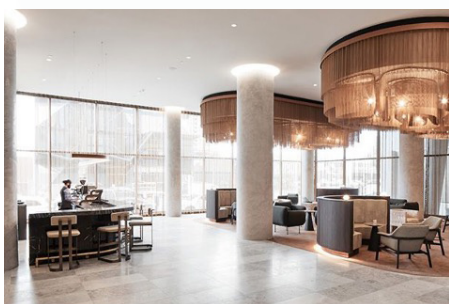
Hamptons Apartments offers short- and long-term accommodation in the coastal suburbs of St Kilda and Port Melbourne and is conveniently located in Melbourne's CBD. We offer luxury Hamptons-style studio, 1- and 2-bedroom hotel apartments. From the moment you walk in, our interior designers have worked tirelessly to take you from the streets of Melbourne's coastal suburbs to the luxurious Hamptons coastline.



45 Nott Street, Port Melbourne
Local pick up may be available on request
Reservations 1300 426 786
portmelbourne@thehamptonsapartments.com.au

Oakwood Premier Melbourne

Keeping corporate travellers in mind, the property features various business amenities such as a conducive co-working space, four flexible boardrooms and a ballroom for meetings and events. Set within a 40-storey tower, the property boasts 132 luxurious hotel rooms and 260 serviced apartments, styled, and furnished with state-of-the-art in-room technology that caters to the modern traveller. A large fitness centre with games room, resident's lounge and multiple outdoor areas that overlook the city, Port Phillip Bay and surrounding suburbs is also located here.



202 Normanby Road, Southbank
Reservations 03 9087 3400
res.premier-melbourne@oakwood.com

As a valued customer of Fuso Port Melbourne, we are offering free transportation to your choice of the hotels in the booklet.

Please see reception to organise transport.

Restaurants

There is a large array of local restaurants/cafes in the surrounding area.
Transportation available on request - see reception to organise (subject to availability).

Ciao Cielo

115 Bay Street, Port Melbourne
(03) 9646 7697
ciaocielo.com.au

Italian Restaurant
Dine-in • Takeaway • Delivery

Monday	12:00pm - 10:00pm
Tuesday	12:00pm - 10:00pm
Wednesday	12:00pm - 10:00pm
Thursday	12:00pm - 10:00pm
Friday	12:00pm - 10:00pm
Saturday	12:00pm - 10:00pm
Sunday	12:00pm - 10:00pm

Thai Thani Docklands

3/851 Collins Street, Docklands
(03) 9620 3452
doordash.com

Restaurant
Dine-in • Takeaway • Delivery

Monday	11:30am - 9:00pm
Tuesday	11:30am - 9:00pm
Wednesday	11:30am - 9:00pm
Thursday	11:30am - 9:00pm
Friday	11:30am - 9:00pm
Saturday	12:00am - 9:00pm
Sunday	Closed

Chilangos Mexican Cantina

855 Collins Street, Docklands
(03) 9112 9450
resmio.com

Mexican Restaurant
Dine-in • Takeaway • Delivery

Monday	11:00am - 3:00pm
Tuesday	11:00am - 3:00pm
Wednesday	11:00am - 3:00pm
Thursday	11:00am - 3:00pm
Friday	11:00am - 3:00pm
Saturday	Closed
Sunday	Closed

Mr Hobson

9 Waterfront Place, Port Melbourne
(03) 9646 6299
mrhobson.com.au

Restuarant
Dine-in • Kerbside Pick-up • Delivery

Monday	7:00am - 10:00pm
Tuesday	7:00am - 10:00pm
Wednesday	7:00am - 10:00pm
Thursday	7:00am - 10:00pm
Friday	7:00am - 10:00pm
Saturday	7:00am - 11:00pm
Sunday	7:00am - 11:00pm

Grey and Bliss Cafe

197 Bay Street, Port Melbourne
(03) 9646 9989
greyandbliss.com.au

Cafe
Dine-in • Takeaway

Monday	7:00am - 4:00pm
Tuesday	7:00am - 4:00pm
Wednesday	7:00am - 4:00pm
Thursday	7:00am - 4:00pm
Friday	7:00am - 4:00pm
Saturday	8:00am - 4:00pm
Sunday	8:00am - 4:00pm

Creme Port Melbourne

70 Bay Street, Port Melbourne
(03) 9646 9994
cremecafe.com.au

Cafe
Dine-in • Takeaway • Delivery

Monday	6:00am - 4:00pm
Tuesday	6:00am - 4:00pm
Wednesday	6:00am - 4:00pm
Thursday	6:00am - 4:00pm
Friday	6:00am - 4:00pm
Saturday	6:00am - 4:00pm
Sunday	7:00am - 4:00pm

Shopping

DFO South Wharf

20 Convention Centre Place, South Wharf
(03) 9099 1111

Monday	10:00am - 6:00pm
Tuesday	10:00am - 6:00pm
Wednesday	10:00am - 6:00pm
Thursday	10:00am - 6:00pm
Friday	10:00am - 9:00pm
Saturday	10:00am - 6:00pm
Sunday	10:00am - 6:00pm

Melbourne Central

Cnr LaTrobe and Swanston Streets, Melbourne
(03) 9922 1122

Monday	10:00am - 7:00pm
Tuesday	10:00am - 7:00pm
Wednesday	10:00am - 7:00pm
Thursday	10:00am - 9:00pm
Friday	10:00am - 9:00pm
Saturday	10:00am - 7:00pm
Sunday	10:00am - 7:00pm

Local Attractions

SEA LIFE Melbourne Aquarium

King Street, Melbourne
info@melbourneaquarium.com.au

Sea Life Melbourne Aquarium is an aquarium for the Southern Ocean and Antarctica in central Melbourne, Australia. It's right in front of the Flinders Street Viaduct and across King Street Bridge on the Yara River.

Luna Park Melbourne

18 Lower Esplanade, St Kilda
(03) 9525 5033

Enduring amusement park known for its perimeter roller coaster and giant, ornate carousel.

Monday	Closed
Tuesday	Closed
Wednesday	Closed
Thursday	6:00pm - 10:00pm
Friday	6:00pm - 10:00pm
Saturday	11:00am - 10:00pm
Sunday	11:00am - 7:00pm

Melbourne Skydeck

7 Riverside Quay, Southbank
(03) 9693 8888

Open every day 12:00pm - 10:00pm

Gold-plated observation deck on the 88th floor with panoramic city views & a protruding glass cube

Car Hire

If you require a car while your vehicle is being repaired,
there are car hire companies nearby.

SIXT Car & Truck Rental Melbourne

10 Southern Cross Station, Docklands
(03) 8661 6000
sixt.com.au

Monday	8:00am - 3:00pm
Tuesday	8:00am - 3:00pm
Wednesday	8:00am - 3:00pm
Thursday	8:00am - 3:00pm
Friday	8:00am - 3:00pm
Saturday	8:00am - 3:00pm
Sunday	8:00am - 3:00pm

Thank you for visiting Fuso Port Melbourne

We hope to see you again soon

